

PH SOUTHAMPTON

Floorplan



4 bedrooms



3 bathrooms



Approx. 2,157 Sq. Ft.



2 Car Garage



Elevation A



Elevation B



Elevation C



Elevation D



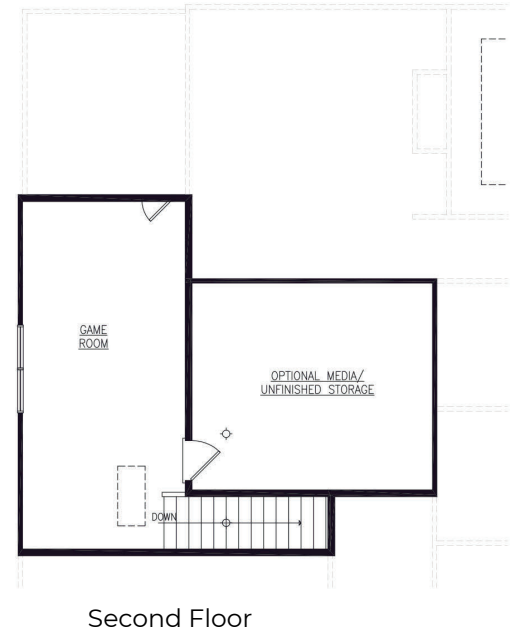
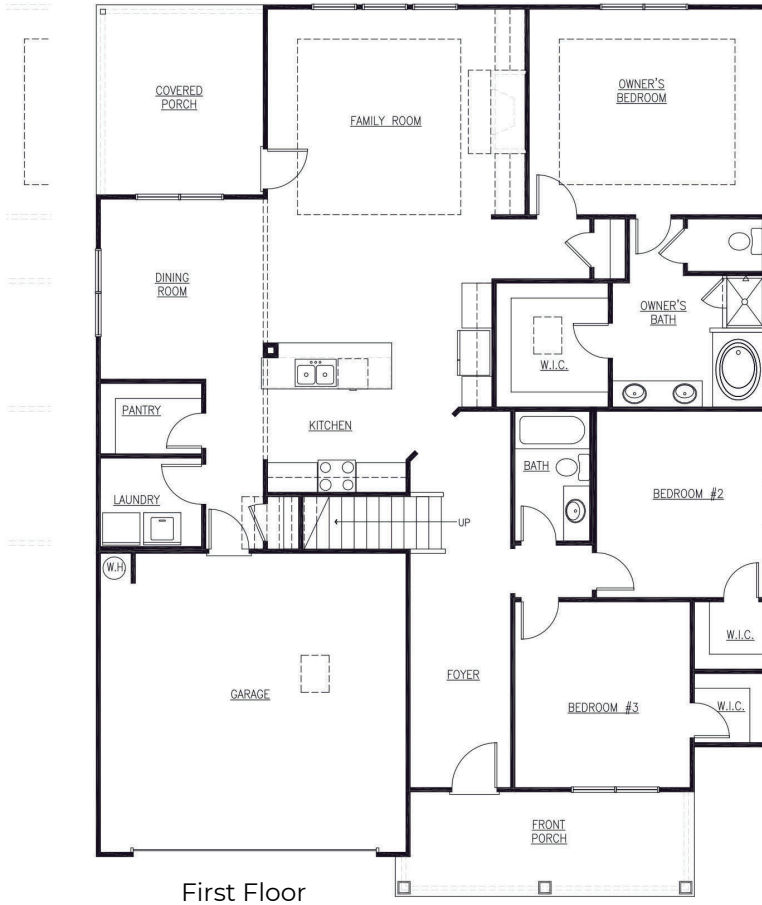
ParanHomes.com

**Prices, plans, and terms are effective on the date of publication and subject to change without notice. Square footage is an approximation, Buyer should rely on his or her own evaluation of usable area. Depictions of homes or other features are conceptual and for marketing purposes only. Other items shown may be decorator suggestions that are not included in the purchase price and availability may vary. Sales & Marketing by Hufham & Company, Keller Williams Atlanta Perimeter (404.314.7379). P:11/18/22 Rv: OP, KL 11/11/19.



PH SOUTHAMPTON

Floorplan



Options



ParanHomes.com

**Prices, plans, and terms are effective on the date of publication and subject to change without notice. Square footage is an approximation, Buyer should rely on his or her own evaluation of usable area. Depictions of homes or other features are conceptual and for marketing purposes only. Other items shown may be decorator suggestions that are not included in the purchase price and availability may vary. Sales & Marketing by Hufham & Company, Keller Williams Atlanta Perimeter (404.314.7379). P:11/18/22 Rv: OP, KL 11/11/19.

