

# PH SUTTON

Floorplan



3 bedrooms



2.5 bathrooms



Approx. 2,550 Sq. Ft.



2 Car Garage



Elevation A



Elevation B



Elevation C



Elevation D



Elevation E

# PH SUTTON

## Floorplan

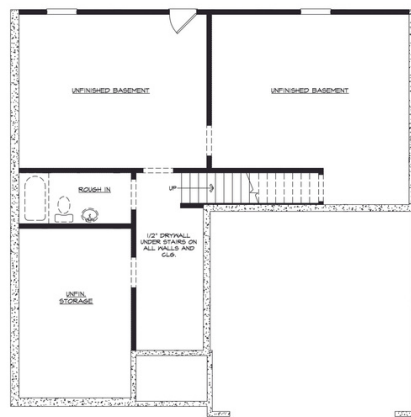


First Floor

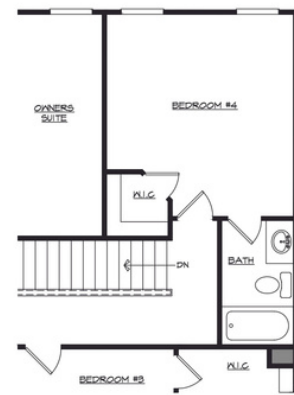


Second Floor

### Options



Optional Unfinished Basement



Optional Bedroom #4 with Bath